

LAMPE CABANON

Le Corbusier

In 1952, on the shores of the French Riviera, Le Corbusier built “Cabanon”: the absolute archetype of essential living. The project, executed according to the rules of the Modulor, is found just a stone’s throw away from the sea and served as a refuge for the architect in his final years. Lampe Cabanon, named after the inspired microcosm, represents a symbol of architecture, design, production, and essential living. The lampshade, made from tracing paper that the architect used, was crafted from a wartime artifact – a mortar shell carrier – found on French beaches. The lamp, for which numerous sketches and designs exist, represents a moment of rebirth in the post-war world.



LAMPE CABANON

LAMPING

Source	E27 LED
Total power	25W
Emission	diffused
Switching	dimmable on cable, according to bulb
Tension	230V
Ip class	IP20
Dimensions	21x42
Notes	Cable length 2,5m, LED 4-25W
Net lamp weight	1,1 kg

Codes

CAB ENW 11

Structure

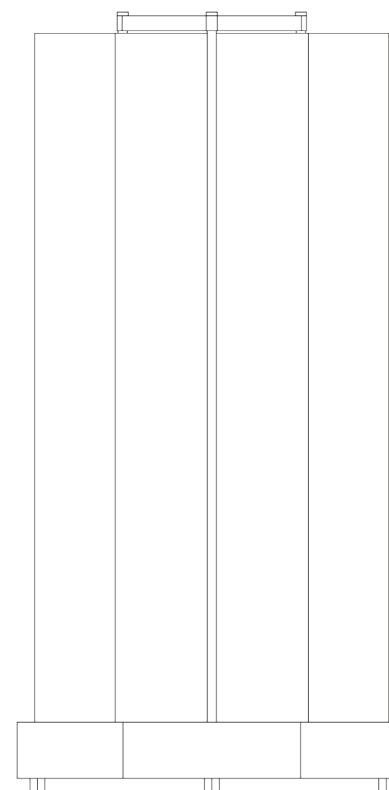
Gun metal/green tracing paper sheet

PACKAGE

Package 01

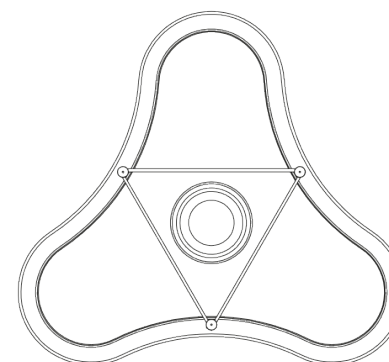
Dimension: 26x28x50 cm / Gross weight: 1,8 kg

Certificazioni



21

42



21